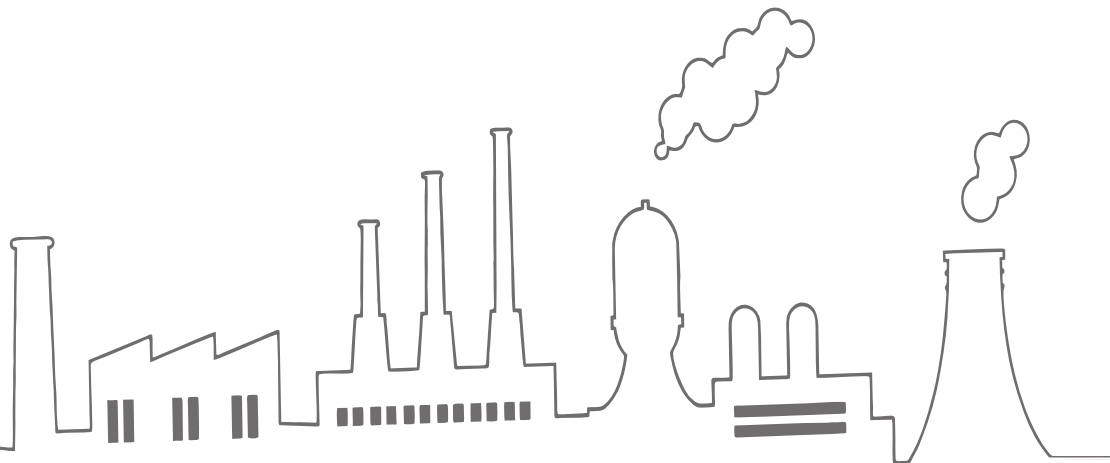


PLUMBING INSERTS AND VALVE



dada corporation



PROFILE

Every year your industry grows more competitive. Products are manufactured faster, cheaper, better. Demands are greater, and your customers' requirements are continually changing. What doesn't change is your need for a reliable, competent source for threaded inserts and Valve products. At Dada Corp, we want to be that source, and we will work hard to earn and maintain your confidence in us. What is important to you is important to us. Dada Corp, our top priority is Total Customer Satisfaction.

Our program emphasizes:

Quality – Statistical Process Control is an integral part of our manufacturing process.

On-time Delivery – Most orders for stock items ship the same day. We are proud that, year after year, we average greater than 98.5% on-time delivery.

Competitive Pricing – Our experienced personnel, the most advanced equipment and highly efficient production methods, combined with blanket order programs, cumulative pricing plans and low minimums, ensure the best price possible for every order.

Customer Service – Our conscientious staff is committed to providing a prompt, courteous response to every customer request. In addition, Dada Corp's extensive database is used by every department, assuring that all certification, packaging and labeling requirements are met.

Application Engineering – With our expertise in design engineering, plastics and the manufacturing process, we are unsurpassed in the design of cost-effective alternatives for special applications. We invite you to rely on Dada Corp for the threaded inserts and Valve products that will help you stay competitive and profitable. We want your business. From design to delivery, we will focus on your total satisfaction. Let us prove it to you.

Sincerely,
Team Dada Corp.

BUSINESS CAPABILITIES

Our business philosophy encourages success through the teamwork concept. Included in this philosophy is the relationship created between Divine Impex and you, the customer. Design Engineering starts the process of building this partnership. We take pride in our ability to design custom inserts specifically for your application. During our Design Input Process, our Engineering Department will utilize their extensive manufacturing and machining knowledge to design an insert that incorporates the specific parameters that you provide us.

The end result is a design that will meet or exceed your specific requirements and be cost effective to produce. Additionally, we can recommend alternative designs in an attempt to provide you with the total lowest cost possible for your application. Our Engineering Department will provide a CAD specification for your review and subsequent approval. Our Engineering Department teams up with the Sales Department to provide you with a prompt quotation for your requirements. Our short delivery times and low minimum order quantity lead the insert industry.

We understand there are times when a standard insert will not meet the specific requirements of your application. The next time your project calls for a special insert, contact our Engineering Department. We will be more than happy to work with you to provide an effective design for your application.

Production Capabilities

Operations*

Thread Rolling, Thread Cutting, Slotting, Knurling, Conventional Tapping, Bent Shank Tapping, Milling, Reaming, Cross Drilling, Cross Tapping, Broaching, Back Drilling, Countersinking, Counter boring and Deburring.

Bar Stock Capacity*

- Round bar.
- Hex bar.
- Square bar.

Material Capability*

Free machining grades of Brass, Bronze, Copper, Carbon Steel and Stainless Steel. The most common grades are Brass Alloy, Stainless Steel Alloys and , Steel.

Part Length Capability*

Starting at approximately .0625" [1.59mm].

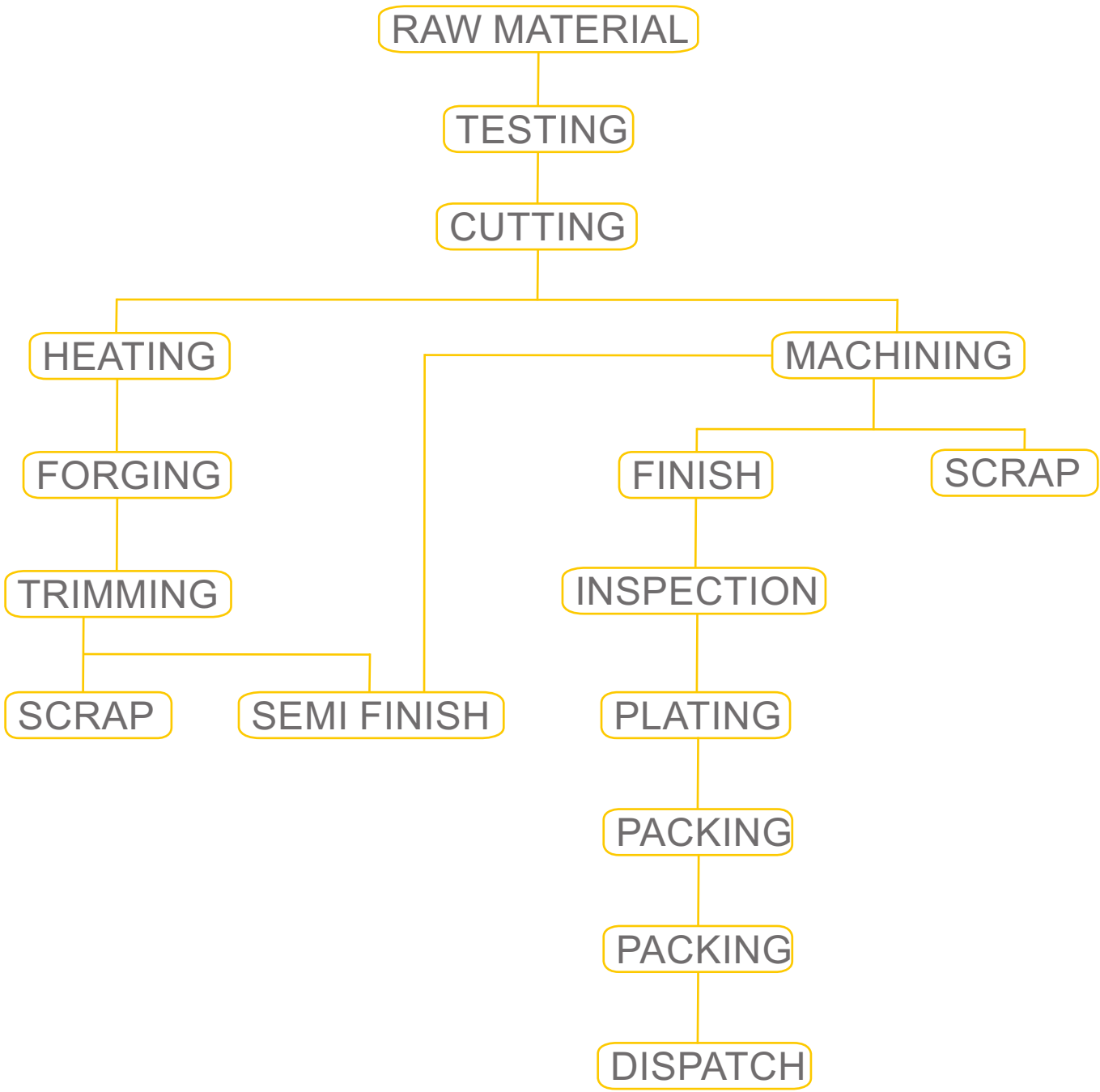
Tolerance Capability*

Lengths as close as $\pm .002$ " [0.05mm]
Diameters as close as $\pm .001$ " [0.025mm]

INDEX

Description	Page
Process Flow Chart	4
Plumbing Male Inserts	5
Plumbing Female Inserts	6
Plumbing Valve	7
Material	8

PROCESS FLOW CHART



FEMALE PLUMBING INSERTS

UPVC, CPVC, PPR, PVC, PE, PPSU and PP Fittings Inserts

Brass Inserts for all methods of installation, including: press-in and mould-in and other various brass inserts as per custom design & specification.



General Information

Type: Female Plumbing Insert.

Application: Pipe Fittings Industries.

Material: Material specification on page no.08

Size: 1/2" to 4" as standard and Other Size options available on request.

Thread: BSP & BSPT, NPT and Other thread options available on request.

Finish: Nickel Plated, Chrome Plated, Natural Finish & Other Finish Upon Request

MALE PLUMBING INSERTS

UPVC, CPVC, PPR, PVC, PE, PPSU and PP Fittings Inserts

Brass Male Inserts for all methods of installation, including: press-in and mould-in and other various brass inserts as per customer design & specification.



General Information

Type: Male Plumbing Insert.

Application: Pipe Fittings Industries.

Material: Material specification on page no.08

Size: 1/2" to 4" as standard and Other Size options available on request.

Thread: BSP & BSPT, NPT and Other thread options available on request.

Finish: Nickel Plated, Chrome Plated, Natural Finish & Other Finish Upon Request.

PLUMBING VALVE

UPVC, CPVC, PPR, PVC, PE, PPSU and PP Fittings Valve

Various Stopping valve for pipe fitting including Double Union Brass Ball Valve, Male Union Ball Valve, Female Union Brass Ball Valve, Concealed Stop Valve with Iron Handle or Plastic Handle or Aluminium or zinc handle, Angle valve and other as per custom design & specification.



General Information

Type: Brass Valve.

Application: Pipe fitting Industries.

Material: Material specification on page no.08

Size: 1/2" to 4"(Ball Valve), 1" (Concealed Valve), 1/2" X 1/2" (Angle Valve) as standard and Other Size options available on request.

Thread: BSP & BSPT, NPT and Other thread options available on request.

Finish: Nickel Plated, Chrome Plated, Natural Finish & Other Finish Upon Request.

MATERIAL OPTION

All the products and its Components can be made from any of the following standard Materials according to the New ROHS Directive

European Material Design (DIN)	European Metal Codes	U.K. B.S. Material Codes	U.S.A. UNS Material Codes	Sweden S.S. Material Codes
CuZn36Pb2 As	CW602N	CZ132	C35330	SS-5170
CuZn36Pb3	CW603N	CZ124	C36000	SS-5112
CuZn37Pb2	CW606N	CZ131	C35300	SS-5114
CuZn38Pb2	CW608N	Cz128	C38500	SS-5122
CuZn39Pb3	CW614N	Cz121	C37710	SS-5150
CuZn40Pb2	CW617N	Cz122		SS-5163
CuZn39Pb2	CW612N	Cz128		SS-5168
CuZn38Pb1.50	CW608N	Cz128		SS-5243
				SS-5246

Free Cutting Brasses

RoHS Compliant Brass Material

PRODUCTS FROM "DC"



FASTENERS



EARTHING & GROUNDING



CABLE GLAND & ACC



GLASS FITTING



TRANSFORMER ACC.



ENGINEERING



BATH FITTINGS

BE OUR CLIENT AND ENJOY

QUALITY CONSISTENCY | DELIVERY ON TIME | COMPETITIVE PRICE

DADA CORPORATION

FACTORY: VILLAGE- DARED, POST- CHELLA, NR.GIDC PHASE 3, JAMNAGAR - 361012GUJARAT, INDIA

REGISTERED OFFICE: SURAT- 395004 GUJARAT, INDIA

CALL: +91 80000 77333 E MAIL: info@dadacorp.co.in, dadacorp@outlook.com

www.dadacorp.co.in

