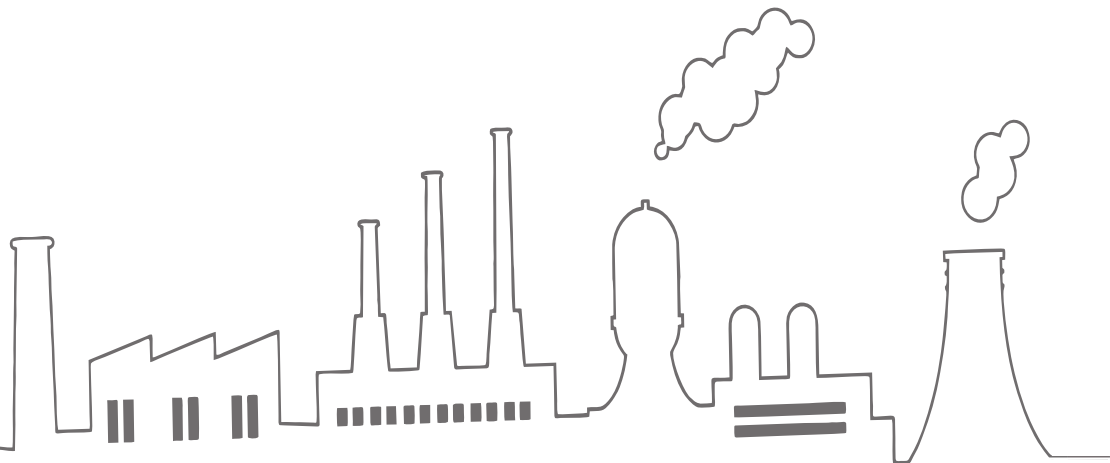


# ENGINEERING PRODUCTS



dada corporation

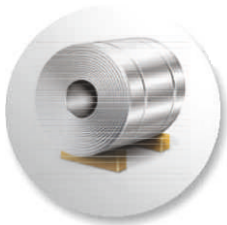


# PROFILE



## MACHINERIES:

- Complete Extrusion Plant & Casting Foundry
- Hand Operate & Automatic Turning Machine
- Hand Operate & Automatic Threading Machine
- Power Press , Hydraulic Power Press & Hand Press
- Drilling , Milling & Slotting Machines
- Lathe Machine



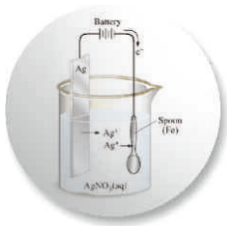
## MATERIAL:

- Brass , Copper , Gun Metal ,  
Bronze, Aluminum, M.S.



## TESTING:

- Ring Gauge
- Pin Gauge
- Out side Micrometer
- Plug Gauge
- Mitutoyo Vernier
- Profile Projector



## FINISHING :

- Electro Tin , Nickel, Copper, Silver & Gold Plating
- Natural Brass , Colored Brass & Blasting
- Buffing



## PACKING:

- PVC Bag , Plain Box
- Thermal PVC Tray for small part
- Shrink Wrapping
- Wooden Cases & Pallets

## PRODUCT RANGE



- **BRASS CABLE GLAND**

BW , CW , E1W, E1FW , A1/A2 , PG/Metric , Marine/JIS , Single Compression , Double Compression , Accessories

- **BRASS ELECTRICAL FITTINGS**

Neutral Link , Terminal Block , Fitting Parts for Switch , Fuse, HRC , MCB,PCB, Energy Meter , Transformer and other Brass Electrical Fitting Parts.

- **BRASS INSERTS**

PPR , CPVC and UPVC Fitting Insert, Plastic Molding Insert

- **BRASS SANITARY FITTINGS**

- Extension Piece
- Reducing Hex Bush
- Tee Elbow
- Brass Nipple
- Brass Union
- Brass Tank Connector
- Extension Reducer
- Hose Nipple
- Brass 3 PC Connector
- Brass Cap
- Brass Nuts
- Brass Plug

- **BRASS GAS FITTING PARTS**

- **BRASS AUTOMOBILE PARTS**

- **BRASS & M.S. FASTENERS**

- **OTHER RANGE OF BRASS PRECISION FITTING PARTS**

## CABLEGLAND



Also Available in  
Standard KIT Packing

### BW 2 PARTS , BW 4 PARTS

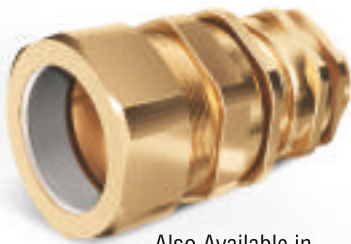
Size	: 20 mm to 90 mm S & L
Standard	: BS 6121
Material	: Brass BS 2874 CZ121 Pb3
Optional Threads	: METRIC, NPT, BSP, PG or as specified
Finish	: Brass Finish, Nickel Finish, Chrome Finish or as specified

### CW 3 PARTS , CW 4 PARTS (CW NPT)

Size	: 20 mm to 90 mm S & L
Standard	: EN 50262 : 1999
Material	: Brass BS 2874 CZ121 Pb3 or as specified
Optional Threads	: METRIC, NPT, BSP, PG or as specified
Finish	: Brass Finish, Nickel Finish, Chrome Finish or as specified



Also Available in  
Standard KIT Packing



Also Available in  
Standard KIT Packing

### E1W

Size	: 20 mm to 90 mm S & L
Standard	: EN 50262 : 1999
Material	: Brass BS 2874 CZ121 Pb3 or as specified
Optional Threads	: METRIC, NPT, BSP, PG or as specified
Finish	: Brass Finish, Nickel Finish, Chrome Finish or as specified

### E1FW

Size	: 20 mm to 90 mm S & L
Standard	: EN 50262 : 1999
Optional Threads	: METRIC, NPT, BSP, PG or as specified
Ingress Protection	: IP 66
Material	: Brass BS 2874 CZ121 Pb3 or as specified
Finish	: Plain Brass or Nickel Plated



Also Available in  
Standard KIT Packing



Also Available in  
Standard KIT Packing

### A1 / A2

Size	: 20 mm to 90 mm
Standard	: EN 50262 : 1999
Material	: Brass BS 2874 CZ121 Pb3 or as specified
Finish	: Brass Finish, Nickel Finish, Chrome Finish or as specified

## CABLEGLAND



### SINGLE COMPRESSION

Material	: Brass (IS 319) -Standard. (In AL/Mild Steel/SS. also available)
Finish	: Nickel plated-Standards. (Tin/Cadmium/Chrome also available)
Threads	: Metric-Standards (ET/BSC/PG/NPT/BSP also available)
Sealing Ring	: Neoprene / Nitrile / Natural Rubber
Ref. Standard	: IS 12943 of 1960

### DOUBLE COMPRESSION

Material	: Brass (IS 319) -Standard. (In AL/Mild Steel/SS. also available)
Finish	: Nickel plated-Standards. (Tin/Cadmium/Chrome also available)
Threads	: ET"/BSC-Standards (In PG/Metric/NPT/BSP also available)
Sealing Ring	: Neoprene / Nitrile / Natural Rubber
Ref. Standard	: IS 1248 of 1981



### PG / METRIC

Size	: PG-7 TO PG-48 / M-12 TO M-63
Finish	: Chrome Finish, Brass Finish, Nickel Finish or as specified
Material	: Brass BS 2874 CZ121 Pb3
Inner Fittings	: Polyamide 6, Neoprene

### MARINE / JIS

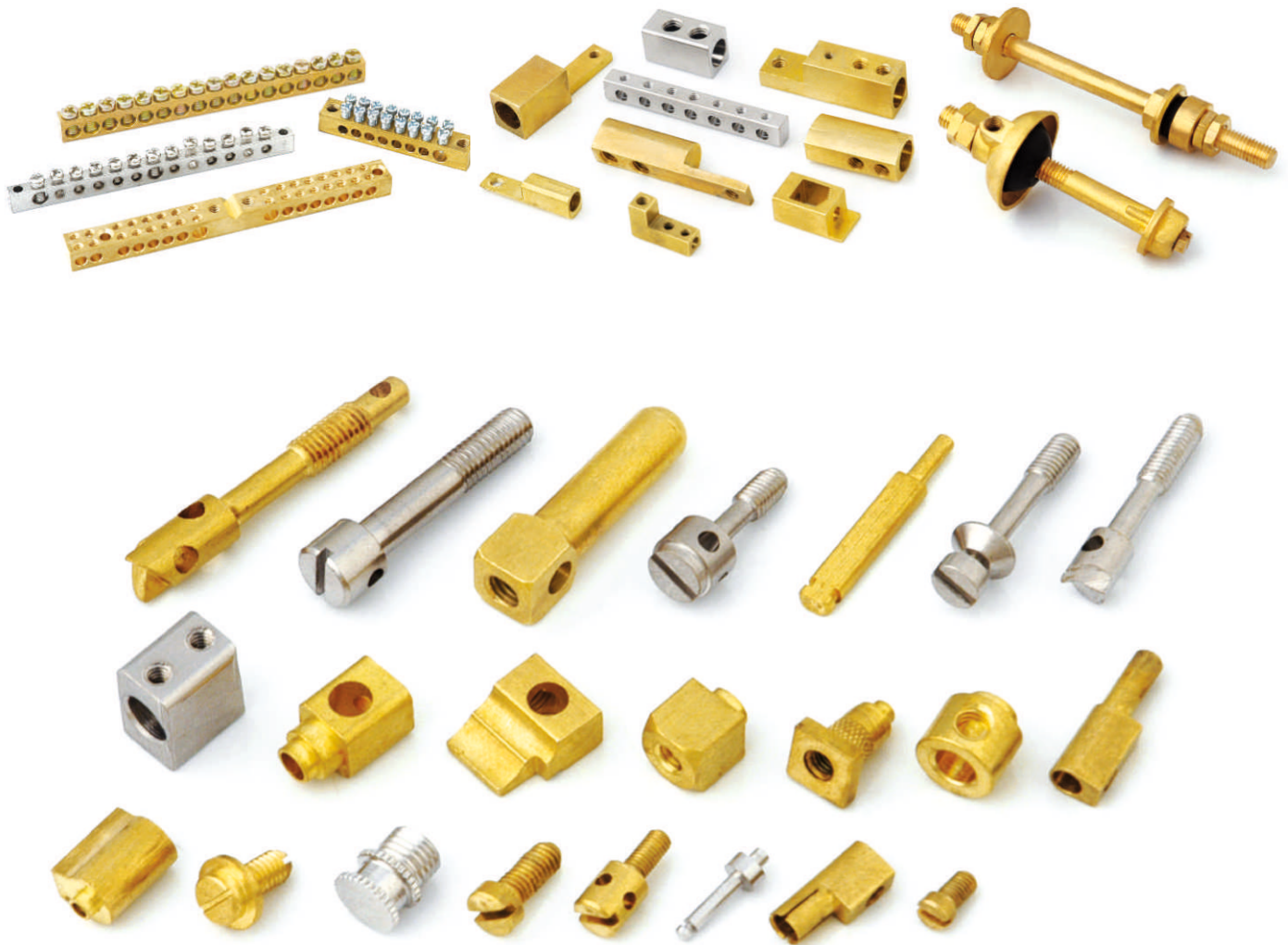
Size	: 10 mm to 90 mm
Optional Thread	: ISO Metric, NPT, NPS, BSP, BSPT, PG
Finish	: Chrome Finish, Brass Finish, Nickel Finish or as specified
Material	: Brass BS 2874 CZ121 Pb3



### CABLE GLAND ACCESSORIES

Brass Lock Nut
Brass Earth Tags
Hex Reducer & Stop Plug
Brass Enlarger
PVC Shrouds

# ELECTRICAL PART



### Our Precision Turned Brass Electrical Parts Range Includes:

- ❖ Brass Neutral Links
- ❖ Brass Energy Meter Parts
- ❖ Brass Switch Parts
- ❖ Brass Fuse Parts
- ❖ Brass Transformer Parts
- ❖ Brass Terminal Blocks
- ❖ Brass Connectors
- ❖ Brass Switchgear Parts
- ❖ Brass HRC & PCB Parts
- ❖ Brass Solid Pins

### Material:

- ❖ Free Cutting Brass IS 319 type (I) or
- ❖ Free Cutting Brass as per BS 249 type (I) or
- ❖ High Grade Free Cutting Brass or
- ❖ Any special Brass Material Composition

### Threads :

- ❖ ISO Metric (MM Threads)
- ❖ BA Threads
- ❖ BSW Threads (Inches)
- ❖ UNC, UNF Threads
- ❖ Any threads as per custom design.

### Finish And Coating :

- ❖ Natural, Nickle Plated, Tin Plated or any coating as per customer specification.

Any kind of Parts can be developed and supplied exactly as per customer specifications, design and requirement.

# INSERTS



## BRASS MALE & FEMALE PPR, CPVC, UPVC MOLDING INSERT

### Inserts (Male & Female) are available with :

- Knurling : Cross , Straight , Diamond , As Specified
- Head : Round , Hex , Flower , As Specified
- Threads : BSP , BSPT, NPT , ISO Matric , As Specified (Go-NoGo)
- Size : ½" to 3"
- Material : Free Cutting Brass IS 319 Type (I), BS 249 Type (I) , As Specified
- Finish : Brass , Natural , Nickel , Tin , As Specified

Also Available according to customer's any requirement.



## BRASS PRECISION INSERT FOR VARIOUS TYPES OF PLASTIC MOLDINGS

### Inserts are available with :

- Knurling : Cross , Straight , Diamond , Unidirectional, Helical , Tappex Type, As Specified
- Threads : ISO Matric (MM), BA , BSW, BSP , NPT or As Specified (Go-NoGo)
- Size : Starting from 2 MM upto as per Requirements
- Material : Free Cutting Brass, High Grade Free Cutting Brass , As Specified
- Finish : Brass , Natural , Nickel , Tin , As Specified

Also Available according to customer's any requirement.

**SANITARY PART**



Extension Piece



Tee Elbow



Nipple / Brass Bush



Socket / Cap / Plug



Tank Connector



Barrel Nipple / Hose Nipple

**LIST OF PRODUCTS :**

- Extension Piece
- Extension Reducer
- Hex Bush & Hex Nipple
- Tee Elbow
- Brass 3 PC Connector
- Hose Nipple
- Barrel Nipple
- Brass Cap
- Brass Nuts
- Brass Tank Connector
- Brass Plug
- Brass Unions
- Other Brass Fitting parts as per requirements.

**MATERIAL :**

Brass IS318- 319-320, CuZn40Pb2, CuZn39Pb3  
Or As per customer's Specifications

**FINISH :**

Brass Natural, Nickel, Chrome,  
Silver, Gold, Electro-Tinned  
Or As per customer's requirements

**SIZE :**

Any kind of Parts can be developed and supplied exactly  
as per customer specifications, design and requirement.



## PRECISION FITTING

### BRASS GAS FITTING PART



We Can Supply Any Types of Brass Gas Fitting Parts According to Customer's Specifications, Drawing or Sample.

### BRASS AUTOMOBILE PARTS



We Can Supply Any Types of Brass Automobile Parts According to Customer's Specifications, Drawing or Sample.

### BRASS & M.S. FASTENERS



We Can Supply Brass & M.S. Fasteners According to DIN/Other Standards and Customer's Requirements.

## PRECISION FITTING



### OUR PRECISION PRODUCT RANGE INCLUDES

- Forging Parts
- Brass Anchors
- Pneumatic Parts
- Flare Fittings
- Industrial Pipe Fittings
- Conduit Fittings
- Liquid Equipment Fittings
- Sheet Metal Parts
- Hydraulic Parts
- Compression Fittings
- Hose Fittings
- Agriculture Fitting Parts
- Connection Fittings
- Any Type of Turned components in Brass

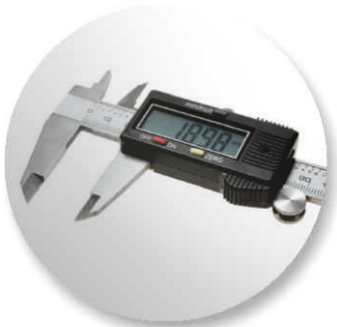
We can supply any types of Precision Brass Fitting Parts according to customer's specifications, Drawing or sample.

**QUALITY CONTROL****THE QM SYSTEM IS ISO 9001:2008 CERTIFIED**

Quality being of prime importance, all our activities revolve around managing and maintaining efficient Quality Management System. This provides the basis required for reliable planning, management and implementation of the quality characteristics in an organized and reproducible form. The focus is on a process-orientated approach. All the areas from initial client contacts to final inspection and product dispatch are closely monitored by proficient people. The entire team of the company works as one functional unit towards a common goal of efficient Quality Management.

**QUALITY ASSURANCE**

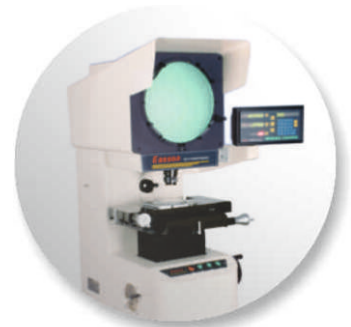
The combination of Quality Management and Quality Assurance ensure that the product characteristics specified by customers are precisely met. Various measures and quality assurance procedures such as maintaining technically advanced materials laboratory and specially recognized procedures for various tests on materials are carried out in a highly professional manner. In addition to this, individual inspection facility is provided which assures quality for customers.

**EQUIPMENTS USED FOR QUALITY TESTING**

VERNIER



MICRO METER



PROFILE PROJECTOR



RING GAUGE



PLUG GAUGE



PIN GAUGE

BE OUR CLIENT AND ENJOY

QUALITY CONSISTENCY | DELIVERY ON TIME | COMPETITIVE PRICE